

# 2015 IRM: Proposed MARS Topology

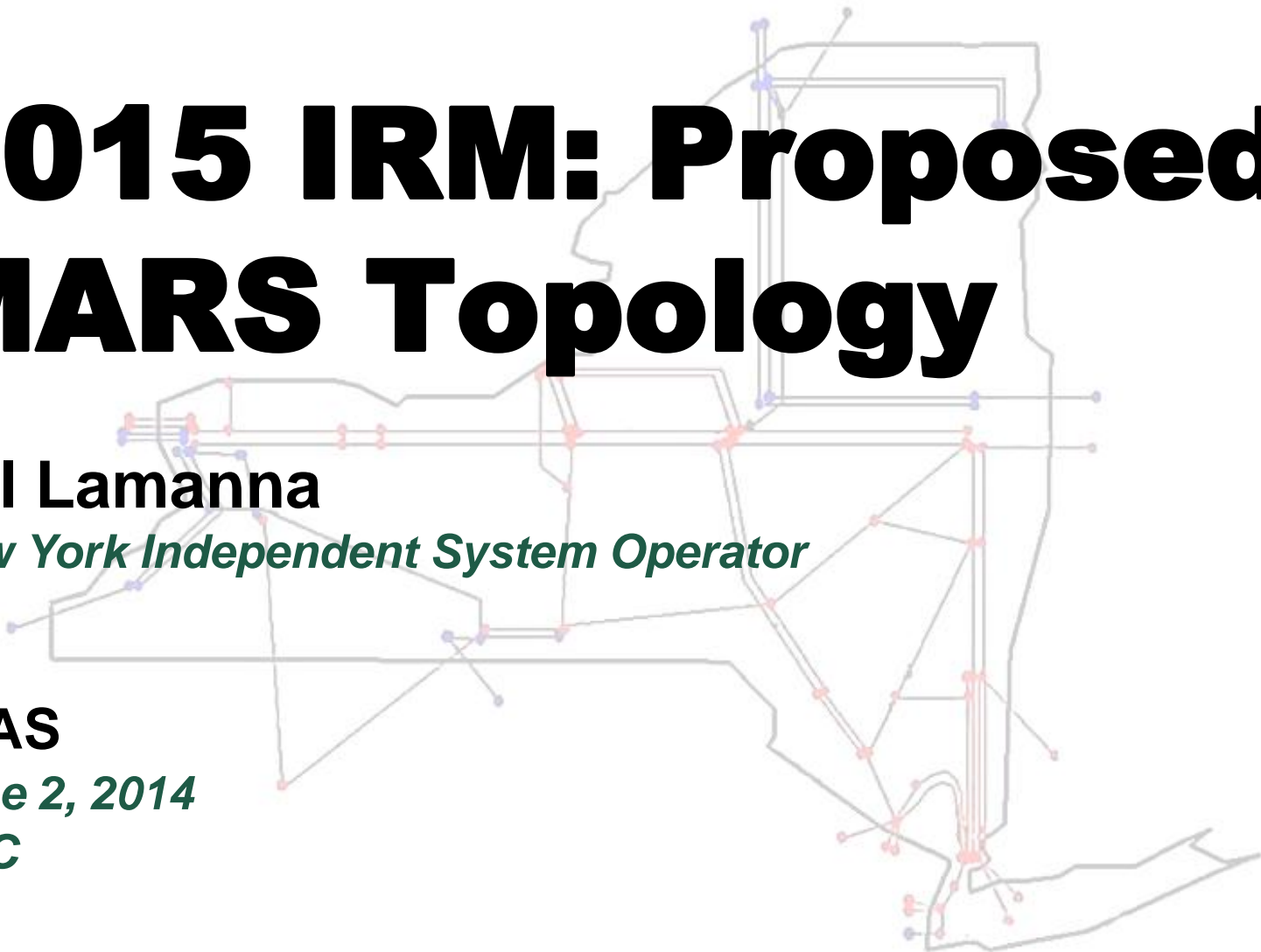
**Bill Lamanna**

*New York Independent System Operator*

**TPAS**

*June 2, 2014*

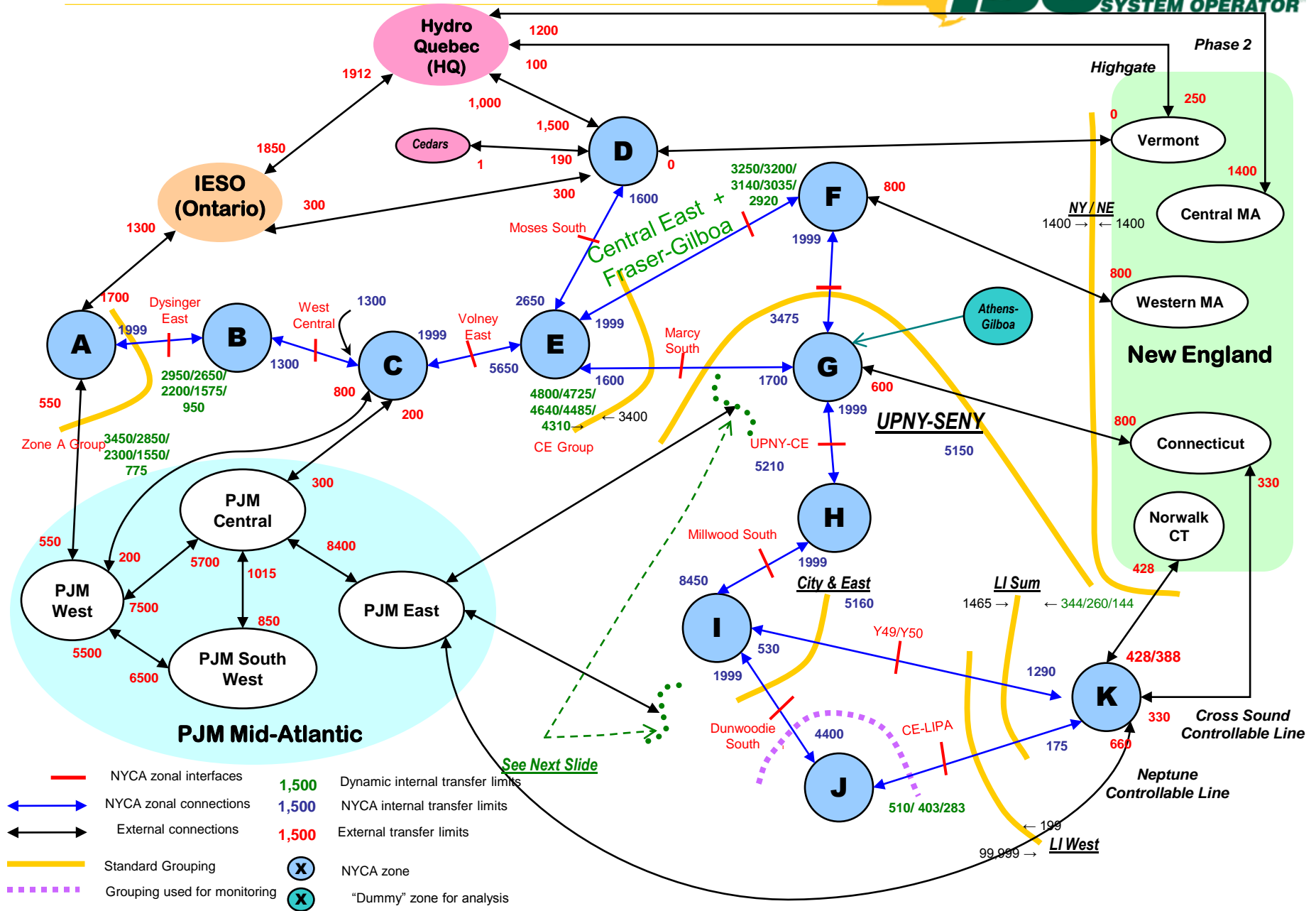
**KCC**



# IRM MARS Topology

- ◆ Proposed MARS topology
  - *Year 2015: Before TOTS*
  
- ◆ For TPAS and ICS Review

# Transmission System Representation for Year 2015

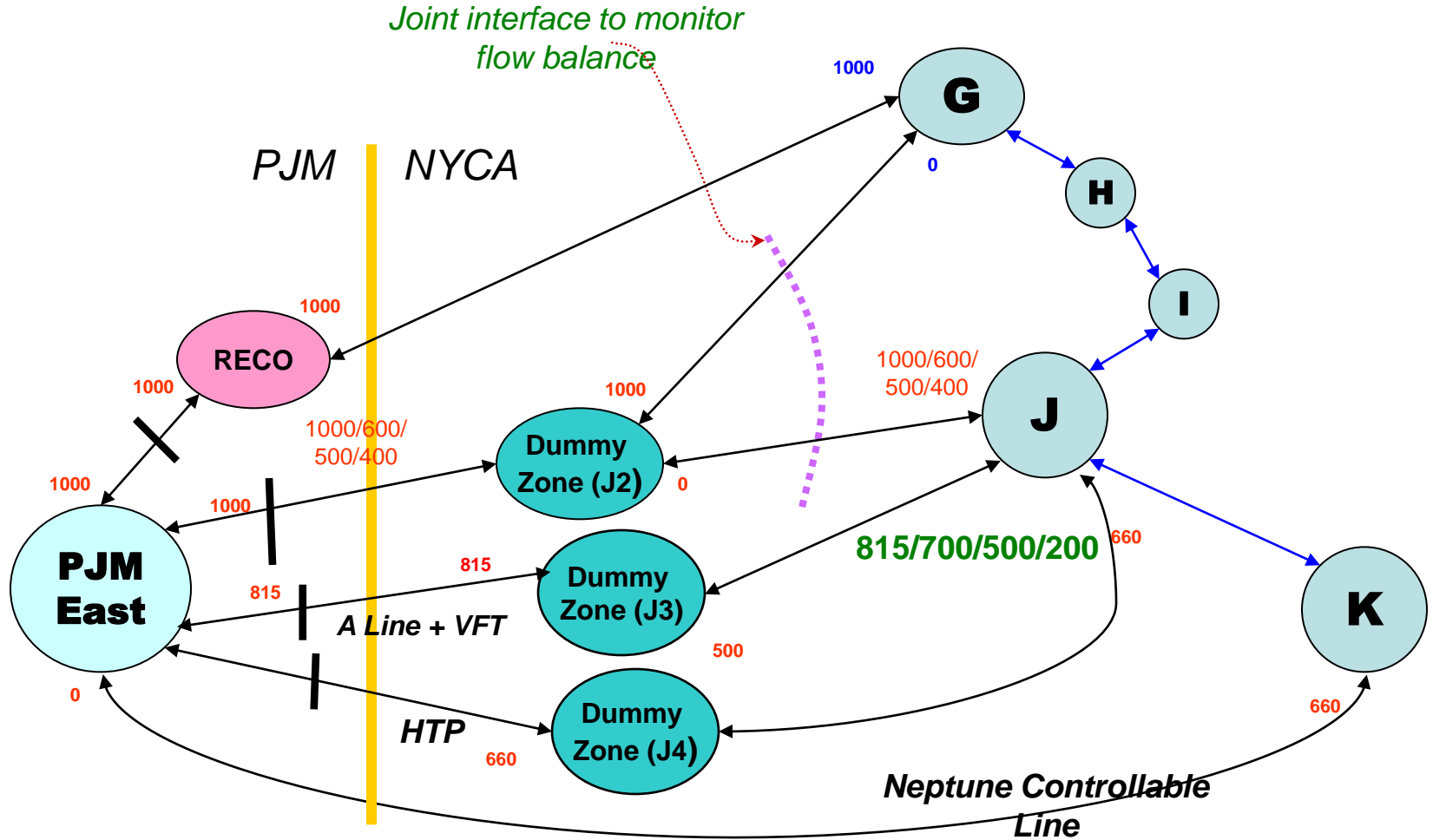


# IRM MARS Topology

Year	Interface	Oswego Complex Units*				
		All available	any 1 out	any 2 out	any 3 out	any 4 out
2015	Central East MARS	3250	3200	3140	3035	2920
	CE Group	4800	4725	4640	4485	4310
2016 - 2024	Central East MARS	3100	3050	2990	2885	2770
	CE Group	5000	4925	4840	4685	4510

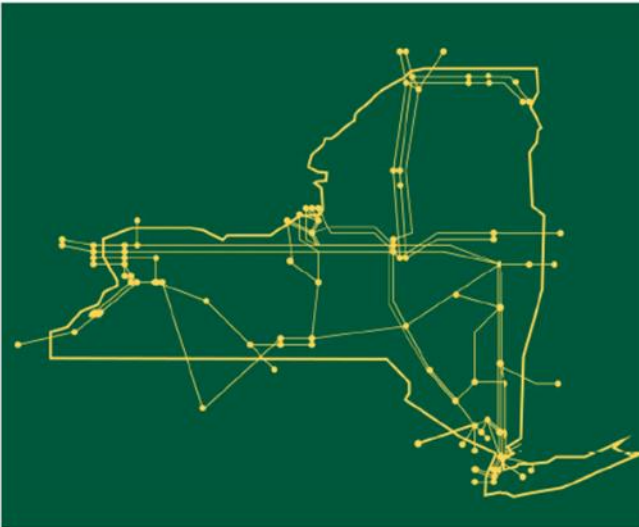
\* 9 Mile Point 1, 9 Mile Point 2, Fitzpatrick, Oswego 5, Oswego 6, Independence (Modeled as one unit in MARS)

Year	Interface	Huntley / Dunkirk Units				
		All available	any 1 out	any 2 out	any 3 out	4 out
2015	Dysinger East	2950	2650	2200	1575	950
	Zone A Group	3450	2850	2300	1550	775
2016	Dysinger East	2900	2600	2150	1525	900
	Zone A Group	3425	2825	2275	1525	750
2017	Dysinger East	2850	2550	2100	1475	850
	Zone A Group	3400	2800	2250	1500	725
2018	Dysinger East	2825	2525	2075	1450	825
	Zone A Group	3375	2775	2225	1475	700
2019	Dysinger East	2800	2500	2050	1425	800
	Zone A Group	3350	2750	2200	1450	675



**(PJM East to RECO) + (PJM East to J2) + (PJM East to J3) + (PJM East to J4) = 3075 MW**

The New York Independent System Operator (NYISO) is a not-for-profit corporation responsible for operating the state's bulk electricity grid, administering New York's competitive wholesale electricity markets, conducting comprehensive long-term planning for the state's electric power system, and advancing the technological infrastructure of the electric system serving the Empire State.



[www.nyiso.com](http://www.nyiso.com)