

NYISO Data Evaluation - ICAP to UCAP Translations

Locational Capacity Areas

	Location	Forecasted Peak Load	Requirement %	Derating Factor %	ICAP MW Requirement
NYISO Data					5,294.5
2006 S	LI	5,348.0	99.0%	0.0348	5,294.5
2006 S	NYC	11,627.8	80.0%	0.0542	9,302.2
2006 S	NYCA	33,294.5	118.0%	0.0543	39,287.5
2006 W	LI	5,348.0	99.0%	0.0420	5,294.5
2006 W	NYC	11,627.8	80.0%	0.0506	9,302.2
2006 W	NYCA	33,294.5	118.0%	0.0501	39,287.5
2007 S	LI	5,421.8	99.0%	0.0580	5,367.6
2007 S	NYC	11,780.0	80.0%	0.0388	9,424.0
2007 S	NYCA	33,447.4	116.5%	0.0446	38,966.2
2007 W	LI	5,421.8	99.0%	0.0736	5,367.6
2007 W	NYC	11,780.0	80.0%	0.0587	9,424.0
2007 W	NYCA	33,447.4	116.5%	0.0551	38,966.2
2008 S	LI	5,423.8	94.0%	0.0811	5,098.4
2008 S	NYC	11,963.7	80.0%	0.0690	9,571.0
2008 S	NYCA	33,808.5	115.0%	0.0578	38,879.8
2008 W	LI	5,423.8	94.0%	0.1044	5,098.4
2008 W	NYC	11,963.7	80.0%	0.0593	9,571.0
2008 W	NYCA	33,808.5	115.0%	0.0614	38,879.8
2009 S	LI	5,474.0	97.5%	0.1103	5,337.2
2009 S	NYC	12,050.0	80.0%	0.0814	9,640.0
2009 S	NYCA	33,930.2	116.5%	0.0801	39,528.7
2009 W	LI	5,474.0	97.5%	0.1222	5,337.2
2009 W	NYC	12,050.0	80.0%	0.1129	9,640.0
2009 W	NYCA	33,930.2	116.5%	0.0947	39,528.7
2010 S					
2010 S					
2010 S					
2010 W					
2010 W					
2010 W					

Calculated Values

2006 S	LI	5,348.0	99.0%	0.0348	5,294.5
2006 S	NYC	11,627.8	80.0%	0.0542	9,302.2
2006 S	NYCA	33,294.5	118.0%	0.0543	39,287.5
2006 W	LI	5,348.0	99.0%	0.0420	5,294.5
2006 W	NYC	11,627.8	80.0%	0.0506	9,302.2
2006 W	NYCA	33,294.5	118.0%	0.0501	39,287.5
2007 S	LI	5,421.8	99.0%	0.0580	5,367.6
2007 S	NYC	11,780.0	80.0%	0.0388	9,424.0
2007 S	NYCA	33,447.4	116.5%	0.0446	38,966.2
2007 W	LI	5,421.8	99.0%	0.0736	5,367.6
2007 W	NYC	11,780.0	80.0%	0.0587	9,424.0
2007 W	NYCA	33,447.4	116.5%	0.0551	38,966.2
2008 S	LI	5,423.8	94.0%	0.0811	5,098.4
2008 S	NYC	11,963.7	80.0%	0.0690	9,571.0
2008 S	NYCA	33,808.5	115.0%	0.0578	38,879.8
2008 W	LI	5,423.8	94.0%	0.1044	5,098.4
2008 W	NYC	11,963.7	80.0%	0.0593	9,571.0
2008 W	NYCA	33,808.5	115.0%	0.0614	38,879.8
2009 S	LI	5,474.0	97.5%	0.1103	5,337.2
2009 S	NYC	12,050.0	80.0%	0.0814	9,640.0
2009 S	NYCA	33,930.2	116.5%	0.0801	39,528.7
2009 W	LI	5,474.0	97.5%	0.1222	5,337.2
2009 W	NYC	12,050.0	80.0%	0.1129	9,640.0
2009 W	NYCA	33,930.2	116.5%	0.0947	39,528.7
2010 S	LI	5,365.0	104.9%	0.1325	5,627.9
2010 S	NYC	11,822.0	79.6%	0.0766	9,410.3
2010 S	NYCA	32,976.0	118.0%	0.0727	38,911.7
2010 W	LI	5,365.0	104.9%	0.1558	5,627.9
2010 W	NYC	11,822.0	79.6%	0.1109	9,410.3
2010 W	NYCA	32,976.0	118.0%	0.0954	38,911.7

Sorted by Area & Period

		Forecasted Peak		Derating Factor	ICAP MW
	Location	Load	Requirement %	%	Requirement

SUMMER

Long Island

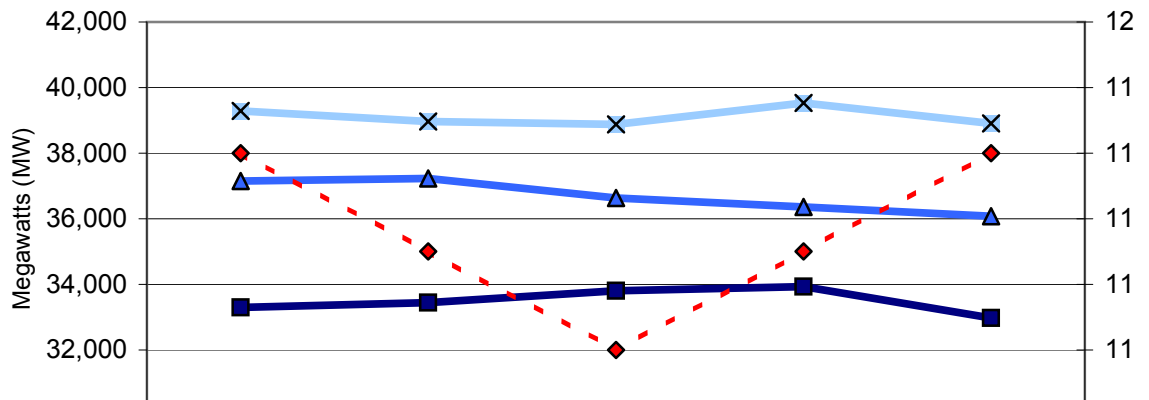
2006 S	LI	5,348.0	99.0%	0.0348	5,294.5
2007 S	LI	5,421.8	99.0%	0.0580	5,367.6
2008 S	LI	5,423.8	94.0%	0.0811	5,098.4
2009 S	LI	5,474.0	97.5%	0.1103	5,337.2

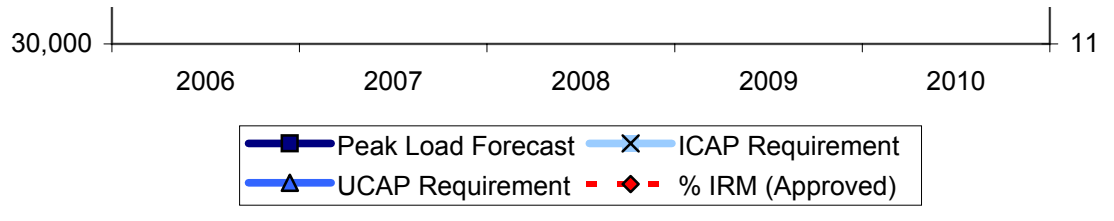
2010 S	LI	5,365.0	104.9%	0.1325	5,627.9
New York City					
2006 S	NYC	11,627.8	80.0%	0.0542	9,302.2
2007 S	NYC	11,780.0	80.0%	0.0388	9,424.0
2008 S	NYC	11,963.7	80.0%	0.0690	9,571.0
2009 S	NYC	12,050.0	80.0%	0.0814	9,640.0
2010 S	NYC	11,822.0	79.6%	0.0766	9,410.3
New York Control Area					
2006 S	NYCA	33,294.5	118.0%	0.0543	39,287.5
2007 S	NYCA	33,447.4	116.5%	0.0446	38,966.2
2008 S	NYCA	33,808.5	115.0%	0.0578	38,879.8
2009 S	NYCA	33,930.2	116.5%	0.0801	39,528.7
2010 S	NYCA	32,976.0	118.0%	0.0727	38,911.7

WINTER

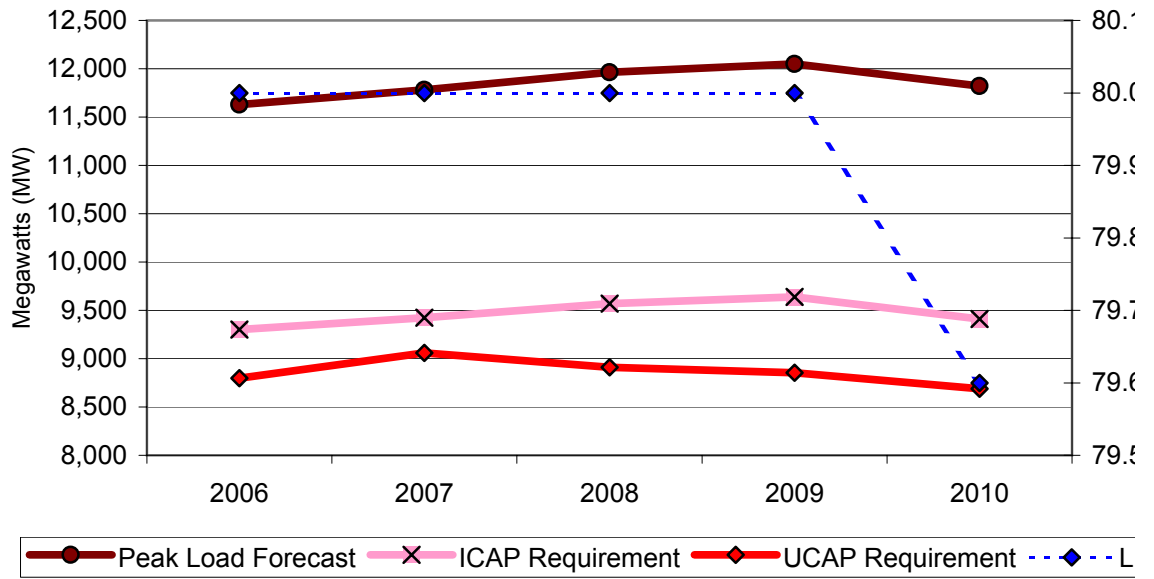
Long Island					
2006 W	LI	5,348.0	99.0%	0.0420	5,294.5
2007 W	LI	5,421.8	99.0%	0.0736	5,367.6
2008 W	LI	5,423.8	94.0%	0.1044	5,098.4
2009 W	LI	5,474.0	97.5%	0.1222	5,337.2
2010 W	LI	5,365.0	104.9%	0.1558	5,627.9
New York City					
2006 W	NYC	11,627.8	80.0%	0.0506	9,302.2
2007 W	NYC	11,780.0	80.0%	0.0587	9,424.0
2008 W	NYC	11,963.7	80.0%	0.0593	9,571.0
2009 W	NYC	12,050.0	80.0%	0.1129	9,640.0
2010 W	NYC	11,822.0	79.6%	0.1109	9,410.3
New York Control Area					
2006 W	NYCA	33,294.5	118.0%	0.0501	39,287.5
2007 W	NYCA	33,447.4	116.5%	0.0551	38,966.2
2008 W	NYCA	33,808.5	115.0%	0.0614	38,879.8
2009 W	NYCA	33,930.2	116.5%	0.0947	39,528.7
2010 W	NYCA	32,976.0	118.0%	0.0954	38,911.7

**Forecast Peak Load, ICAP, UCAP & IRM - Summer
New York Control Area (NYCA)**

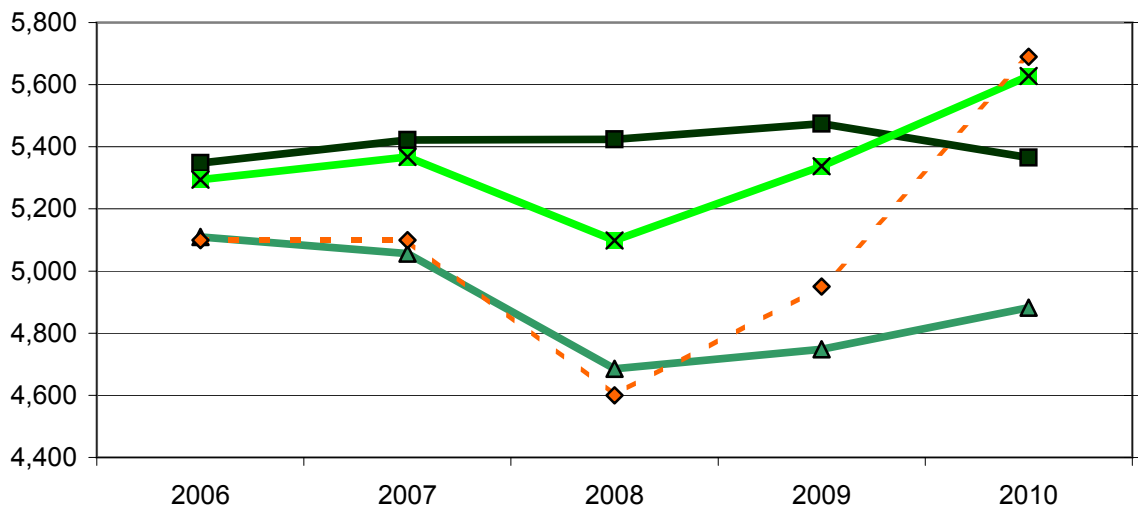




Forecast Peak Load, ICAP, UCAP & IRM - Summer New York City (NYC) - Zone J

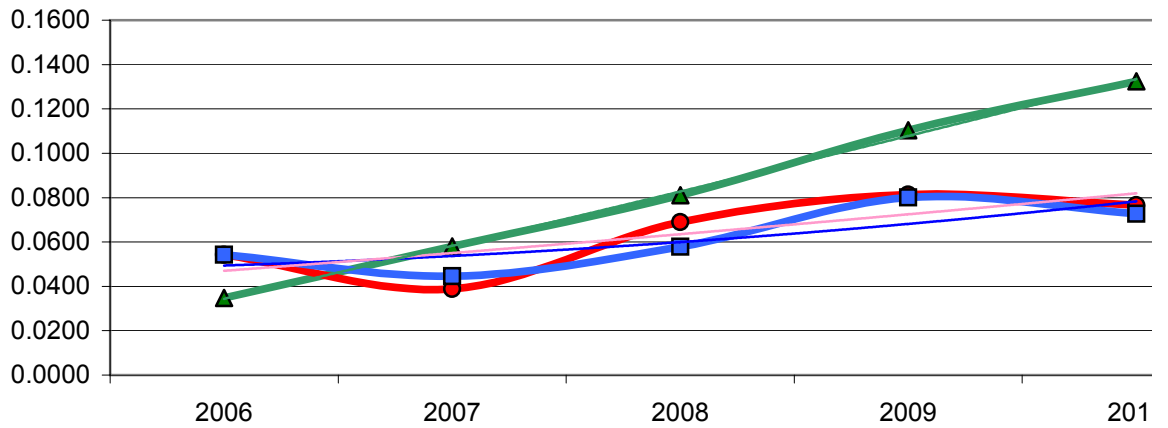


Forecast Peak Load, ICAP, UCAP & IRM - Summer Long Island (LI) - Zone K



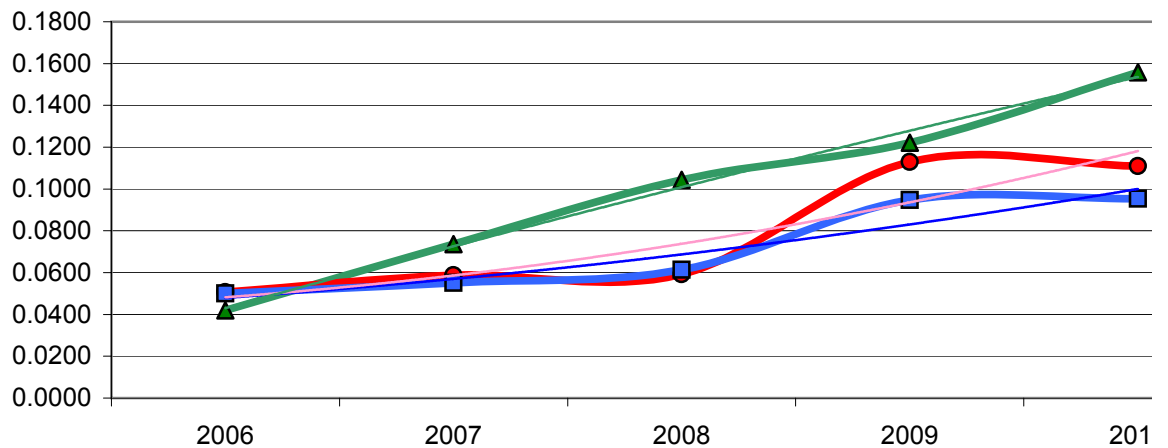
■ Peak Load Forecast
 x ICAP Requirement
 ▲ UCAP Requirement
 - ◇ - L

ICAP to UCAP Translations Derating Factors - Summer



▲ Long Island
 ● New York City
 ■ New York Control Area
— Poly. (New York Control Area)
 — Poly. (New York City)
 — Poly. (Long Island)

ICAP to UCAP Translations Derating Factors - Winter



▲ Long Island
 ● New York City
 ■ New York Control Area
— Poly. (New York Control Area)
 — Poly. (New York City)
 — Poly. (Long Island)



UCAP MW Requirement	UCAP Effective %
5,110.3	95.55%
5,110.3	95.56%
8,798.1	75.66%
37,154.2	111.59%
5,072.2	94.84%
8,831.5	75.95%
37,319.2	112.09%
5,056.3	93.26%
9,058.3	76.90%
37,228.3	111.30%
4,972.5	91.71%
8,870.8	75.30%
36,819.2	110.08%
4,684.9	86.38%
8,910.6	74.48%
36,632.5	108.35%
4,566.1	84.19%
9,003.4	75.26%
36,492.6	107.94%
4,748.5	86.75%
8,855.3	73.49%
36,362.4	107.17%
4,685.0	85.59%
8,551.6	70.97%
35,785.3	105.47%

5,110.3	95.55%
8,798.1	75.66%
37,154.2	111.59%

5,072.2	94.84%
8,831.5	75.95%
37,319.2	112.09%

5,056.3	93.26%
9,058.3	76.90%
37,228.3	111.30%

4,972.5	91.71%
8,870.8	75.30%
36,819.2	110.08%

4,684.9	86.38%
8,910.6	74.48%
36,632.5	108.35%

4,566.1	84.19%
9,003.4	75.26%
36,492.6	107.94%

4,748.5	86.75%
8,855.3	73.49%
36,362.4	107.17%

4,685.0	85.59%
8,551.6	70.97%
35,785.3	105.47%

4,882.4	91.00%
8,689.8	73.51%
36,082.8	109.42%

4,750.9	88.55%
8,366.6	70.77%
35,198.9	106.74%

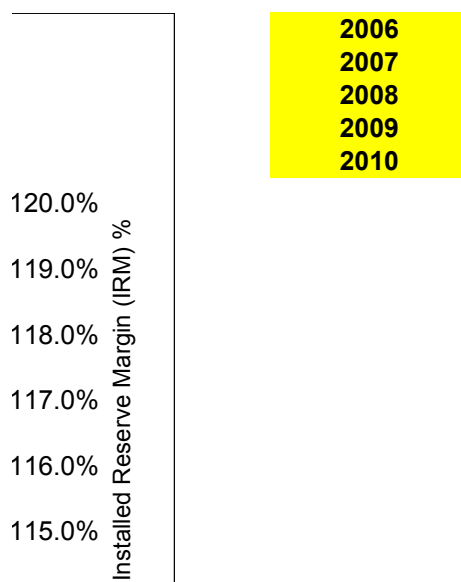
**UCAP MW
Requirement**

**UCAP
Effective %**

**Derating
Deltas**

5,110.3	95.55%	
5,056.3	93.26%	0.0232
4,684.9	86.38%	0.0231
4,748.5	86.75%	0.0292

4,882.4	91.00%	0.022167
8,798.1	75.66%	
9,058.3	76.90%	-0.0154
8,910.6	74.48%	0.0302
8,855.3	73.49%	0.0124
8,689.8	73.51%	-0.0048
37,154.2	111.59%	
37,228.3	111.30%	-0.0097
36,632.5	108.35%	0.0132
36,362.4	107.17%	0.0223
36,082.8	109.42%	-0.0074
5,072.2	94.84%	
4,972.5	91.71%	0.0316
4,566.1	84.19%	0.0308
4,685.0	85.59%	0.0178
4,750.9	88.55%	0.033633
8,831.5	75.95%	
8,870.8	75.30%	0.0081
9,003.4	75.26%	0.0006
8,551.6	70.97%	0.0536
8,366.6	70.77%	-0.0020
37,319.2	112.09%	
36,819.2	110.08%	0.0050
36,492.6	107.94%	0.0063
35,785.3	105.47%	0.0333
35,198.9	106.74%	0.000717



114.0% ⁱⁿ

0.1%

0.0%

9.9%

9.8%

9.7%

9.6%

9.5%

Locational Capacity Requirement
(LCR) %

· LCR %

106.0%

104.0%

102.0%

100.0%

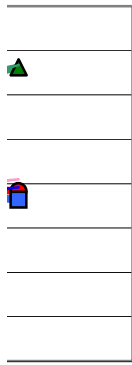
98.0%

96.0%

94.0%

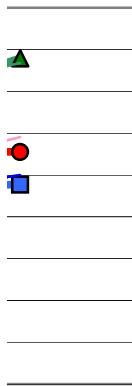
92.0%

LCR %



010

Area
)



010

Area
)