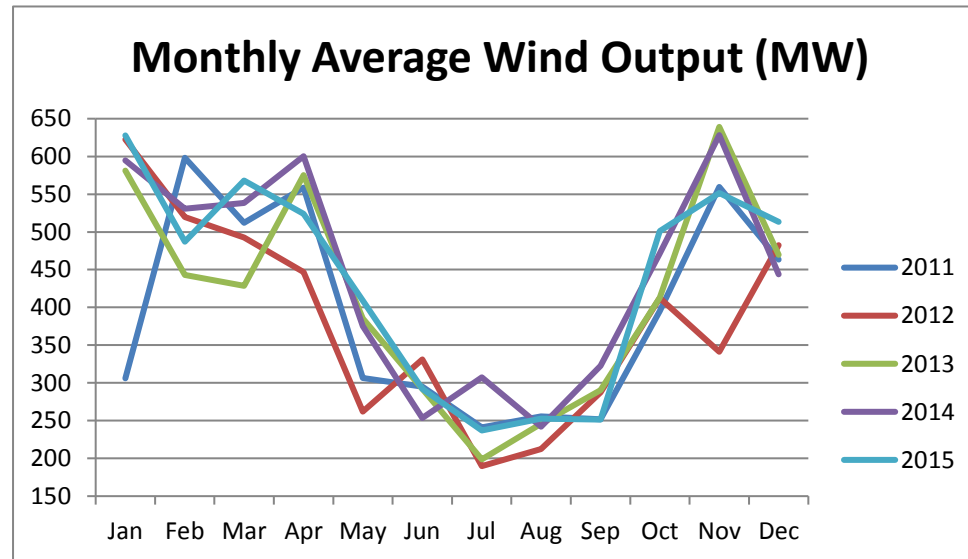


Month	NYCA Total
01/2011	306.1
02/2011	598.2
03/2011	512.2
04/2011	558.8
05/2011	306.4
06/2011	295.1
07/2011	241.1
08/2011	255.8
09/2011	251.9
10/2011	395.1
11/2011	559.6
12/2011	463.3
01/2012	622.5
02/2012	519.9
03/2012	492.8
04/2012	446.8
05/2012	261.9
06/2012	331.1
07/2012	189.8
08/2012	212.5
09/2012	287.5
10/2012	412.6
11/2012	341.4
12/2012	482.6
01/2013	581
02/2013	442.8
03/2013	428.6
04/2013	575.3
05/2013	385.3
06/2013	292.1
07/2013	198.7
08/2013	245.7
09/2013	290.2

Month	2011	2012	2013	2014	2015
Jan	306.1	622.5	581	594.6	627.8
Feb	598.2	519.9	442.8	530.8	487.2
Mar	512.2	492.8	428.6	538.2	567.9
Apr	558.8	446.8	575.3	600.1	524
May	306.4	261.9	385.3	375.3	409.1
Jun	295.1	331.1	292.1	253.6	292.2
Jul	241.1	189.8	198.7	307.5	237
Aug	255.8	212.5	245.7	242	252.7
Sep	251.9	287.5	290.2	322.7	251.6
Oct	395.1	412.6	412.7	471.5	501.1
Nov	559.6	341.4	639.1	628.2	551.4
Dec	463.3	482.6	469.5	443.8	513.5



10/2013	412.7
11/2013	639.1
12/2013	469.5
01/2014	594.6
02/2014	530.8
03/2014	538.2
04/2014	600.1
05/2014	375.3
06/2014	253.6
07/2014	307.5
08/2014	242
09/2014	322.7
10/2014	471.5
11/2014	628.2
12/2014	443.8
01/2015	627.8
02/2015	487.2
03/2015	567.9
04/2015	524
05/2015	409.1
06/2015	292.2
07/2015	237
08/2015	252.7
09/2015	251.6
10/2015	501.1
11/2015	551.4
12/2015	513.5