

**De-Carbonization / DER Report for NYSRC Executive Committee Meeting 6/12/2026**

Contact: Matt Koenig (koenigm@coned.com)

The June 2026 edition of the De-Carbonization / Distributed 6 Resources (DER) Report includes these articles:

- Charles River Associates: NY Hybrid Electrification Study
- NYSERDA Announces \$6 Million Awarded to Integrate Electric Vehicles into New York’s Electric Grid
- CleanTechnica / Overview Corp: Articles on Development of Orbital-Based Solar Power
- A Closer Look at Large Loads in the NYISO Interconnection Queue
- Snapshots of the NYISO Interconnection Queue and Cluster Queue: Storage / Solar / Wind / Co-located

**Charles River Associates: NY Hybrid Electrification Study**

On May 15<sup>th</sup>, Charles River Associates published the [Hybrid Electrification Study \(download link\)](#) for the New York State Department of Public Service (DPS). The study evaluated the customer-level economics and energy system impacts of residential building electrification retrofits across a range of modeled pathways in New York State. The study was commissioned in response to a policy and planning tension between the [PSC’s Energy Efficiency and Building Electrification \(EE/BE\) Orders](#) -which prioritize Full Electrification - and gas utility Long-Term Plans, which have advanced hybrid electrification as a potential transitional approach. While weighing the impacts and tradeoffs of hybrid electrification alongside related policy efforts (EE/BE Orders and gas system planning), the study specifically did not recommend a policy outcome or pathways to electrification. Rather, it concluded that no singular approach is sufficient on its own and that a coordinated and flexible approach is required to achieve policy outcomes in New York State.

Regarding customer economics and adoption, the study found that full electrification is generally more economical than hybrid electrification under current policy and market conditions. The report also concluded that existing full electrification incentives (\$5,000-\$12,000 depending on customer and region) materially improve economics and often outweigh the perceived installed-cost advantages of hybrid systems. The study determined that fuel type strongly influences economics and adoption, with fuel oil and propane customers showing significantly better electrification economics than natural gas customers.

Results indicated that hybrid electrification can be an effective long-term strategy to enhance grid utilization and promote customer affordability. The authors expect electrification to shift the electric system toward a winter-peaking profile, raising considerations around winter reliability. Notably, hybrid electrification may reduce winter peak demand and may delay the transition to a winter-peaking bulk power system, thereby helping defer transmission, distribution, and generation capacity investments.

Findings that are specific to the electric system include:

- Hybrid Electrification can be an effective long-term strategy to enhance grid utilization and promote customer affordability. Starting in the 2040s, as the NY electric system approaches a winter peak transition, Hybrid Electrification has the ability to significantly reduce costs across the electricity value chain in NYS, supporting customer affordability. The Hybrid scenario leads to more than \$6.6B in total nominal avoided bulk transmission and local T&D capital investment in NYS relative to the Base scenario, most of which is concentrated in the 2040s.
- Today, New York electric utilities’ T&D systems have meaningful “headroom” to absorb growth in winter peak demand as a result of residential building electrification. CRA’s analysis of the electric utilities’ Hosting Capacity Maps indicated varying degrees of embedded winter headroom across distribution substations and distribution feeders to support growth in winter peak loads. In many cases, adding targeted building electrification loads today could accommodate new heat pump loads and enhance distribution system utilization without requiring immediate upgrades. This can improve

customer affordability (by increasing electricity sales without investment requirement). Over time, however, clustering of building electrification (including alongside other loads, like electric vehicles) could saturate the remaining winter headroom and trigger the need for significant T&D upgrades, often starting in the 2030s. Hybrid Electrification can effectively eliminate the winter peak demand contribution from space heating electrification, which can be impactful if deployed in a targeted way.

- Winter electric system reliability will need to be considered as adoption of Full Electrification accelerates; Hybrid Electrification can provide a tool to reduce investment requirements in incremental winter generation capacity. The specific timing of a transition to a winter-peaking electric system in New York is highly sensitive to the amount of residential Full Electrification, according to CRA's scenario analysis. The switch to a winter-peaking system coupled with tightening winter reserve margins under the current planned capacity mix would likely require additional capacity resources to maintain resource adequacy. In the future, Hybrid Electrification could provide flexibility by delaying the transition to a winter-peaking system by multiple years while higher levels of Full Electrification accelerate the transition to a winter peaking system. In the Hybrid scenario, New York would become a dual-peaking system in the 2040s, which could improve utilization of the grid.
- Targeted electrification is critical to mitigating long-term gas customer bill impacts in scenarios with widespread electrification. The HE Study results underscore that broad, uncoordinated Full Electrification driven primarily by individual customer economics and natural equipment turnover can place upward pressure on remaining gas customer bills, as largely fixed gas system costs are recovered over a shrinking customer Base. In such a future, meaningful mitigation of natural gas customer bill impacts is unlikely to occur through diffuse, customer-driven electrification alone.
- There are several electrification technologies that apply for both Full and Hybrid Electrification, potentially leading customers to have multiple viable options. Central ASHP systems generally offered the best economics for both Full and Hybrid Electrification, but adoption is practically limited to customers with an existing central forced air heating system (existing natural gas, fuel oil, or propane furnaces). Mini-split ASHP systems are the most versatile technology and can be used to electrify almost any residential customer in either a Full Electrification or Hybrid Electrification configuration. Air-to-water heat pump systems address the smallest market (customers with existing hot water boilers) and were frequently less economic than alternatives. Packaged window heat pump systems were particularly competitive for multifamily Full Electrification in New York City, due in large part to assumptions around modularity and ease of installation that can lead to less expensive installations.

As customers electrify, concerns about remaining gas customer costs inevitably arise. The study found that an uncoordinated full electrification pathway could place upward pressure on gas customer bills because largely fixed gas system costs are recovered over a shrinking customer base. Targeted electrification strategies, which would concentrate electrification in specific geographic areas, may help mitigate these impacts by enabling more efficient gas system downsizing.

In summary, the study highlights a fundamental tradeoff in New York's electrification pathways: while full electrification yields the greatest emissions reductions, it also introduces significant challenges related to winter peak demand, system reliability, and infrastructure investment. On the other hand, hybrid electrification offers a more measured emissions trajectory with comparatively lower system costs and improved peak management. The study suggested that no singular pathway is sufficient on its own; rather, a coordinated, adaptive, and data-driven approach is needed to achieve cost-effective, reliable, lower-emissions energy outcomes for New York State.

## **NYSERDA Announcement: \$6 Million Awarded to Integrate Electric Vehicles into New York's Electric Grid**

On May 21<sup>st</sup>, NYSERDA [Announced that over \\$6 million has been awarded to seven projects](#) to advance technologies that can help integrate electric vehicles efficiently into New York's electric grid. Through the State's Vehicle Grid Integration Program, the awarded projects will advance solutions to enhance grid flexibility, shift charging to accommodate energy demand, and lower charging costs for consumers.

NYSERDA's [Vehicle Grid Integration Program](#) competitively awards projects that are scalable and advance electric vehicle (EV) charging infrastructure through product development, technology demonstrations, or new business models. Technologies include bi-directional charging, energy storage, on-site energy generation, and EV managed charging.

The awarded projects include:

- Bringing V2G Technology to New York Refuse Trucks: More than \$1.6 million was awarded to Roundtrip EV Solutions to demonstrate bi-directional, fast charging in four refuse trucks for two municipal fleets in Ulster County.
- Gravity VGI Platform: Nearly \$1 million was awarded to Gravity to develop a bidirectional Vehicle Grid Integration (VGI) platform to reduce EV charging station installation costs and balance energy by allowing EVs to feed power back to buildings in Manhattan.
- Integrating Refrigerated Trailers and Thermal Storage into NY Power Grid: Nearly \$1 million was awarded to [Energy One](#) to develop and demonstrate a platform that integrates electric refrigerated trailers (eTRUs) with building-based thermal energy storage at the Hunts Point Food Distribution Center in Brooklyn.
- Joint Planning of Charging Networks and Power Grids for Diverse EV Integration: More than \$700,000 was awarded to New York University to develop a comprehensive [EV planning software tool](#) for utility stakeholders to address gaps in EV charging infrastructure deployment and power grid upgrade planning in New York City.
- [Optiwatt](#) Long Island EV - VGI Transformer Protection Demonstration: More than \$600,000 was awarded to Optiwatt for demonstration projects on Long Island where customers can use an active EV managed charging platform that balances energy loads.
- [Pvilion's Solar Powered Integrated Structures](#) (SPIS): \$500,000 was awarded to Pvilion to demonstrate a portable, solar-powered off-road EV charging solution using its Solar Power Integrated Structure (SPIS) with electric construction equipment at Westchester Tool Rentals in Peekskill and with electric farm equipment at Rensselaer Polytechnic Institute (RPI) Manufacturing Innovation Learning Laboratory in Troy.
- Wireless Static and Dynamic EV Charging Project: \$1 million was awarded to [Electreon Wireless](#) to demonstrate wireless charging for electric shuttle vans that reduce grid interconnection costs, lower peak energy demand, and improve fleet operating efficiency in Buffalo.

NYSERDA invests over \$96 million per year through its innovation and research programs to attract world class energy innovators, reduce risk for private investors, and remove barriers to clean energy adoption in New York State, leveraging \$15 in additional investment for every \$1 spent.

New York State is investing nearly \$3 billion in zero-emission vehicles as well as expanding access to clean transportation to benefit all New Yorkers, including those in low-income or disadvantaged communities. In addition to the [Drive Clean Rebate Program](#), other state initiatives include these other programs: [EV Make-Ready](#), [Charge-Ready NY 2.0](#), [EVolve NY](#), the [New York Truck Voucher Incentive Program \(NYTVIP\)](#), the [New York School Bus Incentive Program](#) and the [Direct Current Fast Charger Program](#) through the auspices of the [National Electric Vehicle Infrastructure \(NEVI\) program](#).

Funding for this initiative is through the [Clean Energy Fund \(CEF\)](#).

## CleanTechnica / Overview Articles on Development of Orbital-Based Solar Power

These two articles ([Clean Technica](#) / [Promotion from Overview Energy](#)) describe how the start-up company [Overview Energy](#) has developed a design for an orbital solar-power resource that can piggyback on existing solar power plants. The company recently won an Air Force contract to study space-based power for military bases.

Legacy space solar energy concepts all fail more than one of these criteria: Microwaves raise safety, spectrum, and regulatory concerns and require dedicated receivers the size of towns. Orbital mirrors create disruptive light and offer only an hour or two of daylight extension. Narrow-beam lasers require expensive custom hardware and push up against safety limits as power increases.

The Overview design pushes the envelope on [solar innovation](#) by utilizing a wide-beam, geosynchronous, near-infrared system that safely delivers power to existing solar projects on Earth. Solar energy collection satellites will operate at an altitude of about 22,000 miles high in geosynchronous orbit, collecting sunlight continuously and transmitting it as low-intensity, invisible infrared light. The beam is never more intense than the sun, never visible, and never harmful—passively safe for people, wildlife, aircraft, and other spacecraft. It's the same wavelengths used by night vision security cameras outside of our houses.

Overview's space solar solution eliminates the time, cost, and siting limitations of standalone receivers, by taking advantage of existing solar facilities. The system is designed to function as a sort of roaming peaker plant, but without the gas turbines. The receivers are existing solar projects, so there's no new land, construction, or years-long wait for interconnection. The satellites are the first power plants that can move, directing energy across regions in seconds and across continents in minutes. That directionality creates greater resilience and reliability across the power grid.

Solar projects can earn revenue during the 65-75% of hours their assets currently sit idle. Utilities can bypass congested corridors and draw on energy reserves above the atmosphere. Off-takers like data centers get access to massive energy capacity and can come online in days instead of years. That same resilience supports round-the-clock operational readiness for critical facilities. It's a peaker plant that can move, delivering into the most premium hours of the grid all the time. Essentially, it's 5 o'clock somewhere.

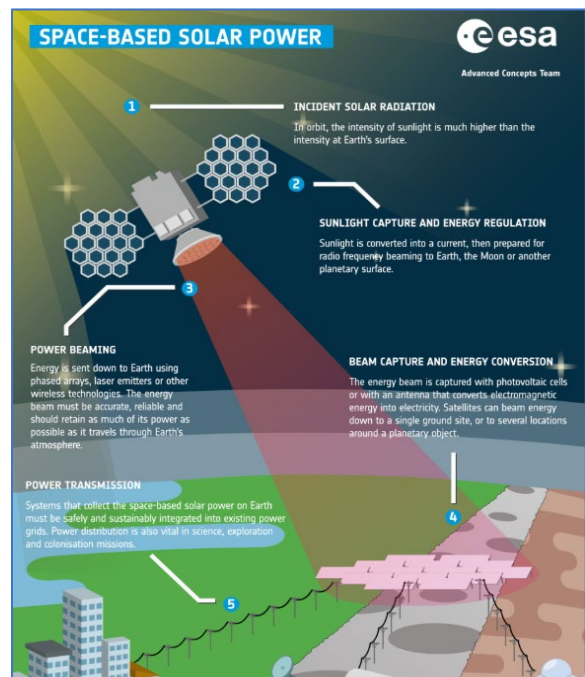


Image courtesy of [European Space Agency](#)

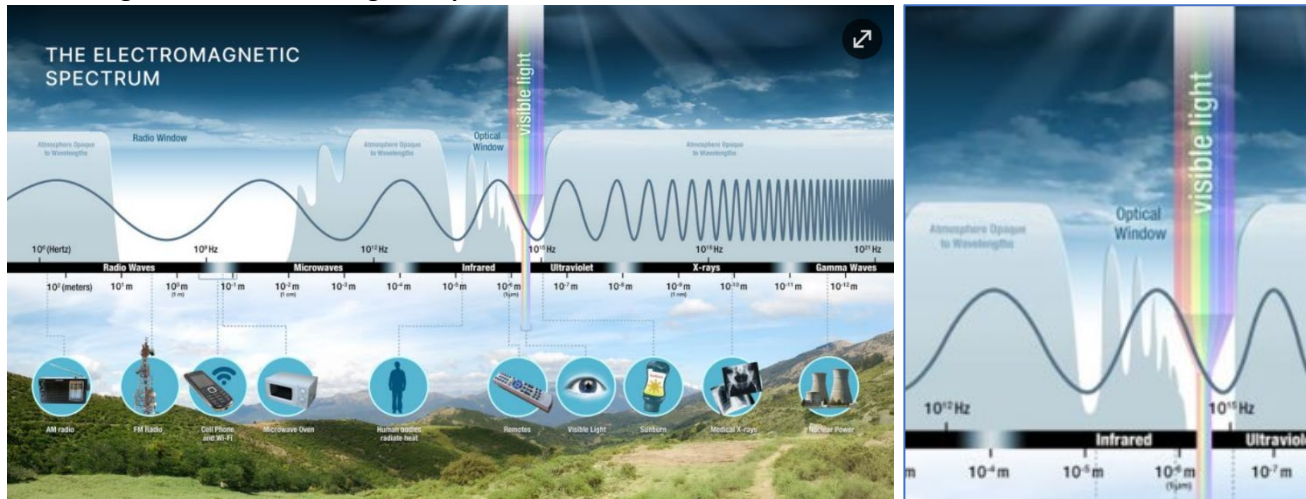
On May 6, Overview announced the award of its first Air Force contract. Issued through the Secretary of the Air Force for Installations, Energy, and Environment, the contract tasks Overview with demonstrating how the technology can support Defense Department operations. The work will focus on energy applications in constrained and contested logistics environments, including how this approach can help [provide power to large U.S. military installations](#) in remote locations and reduce reliance on fuel supply chains.

The Company's ongoing airborne program has already demonstrated safe, precise delivery of power from a moving aircraft to solar panels on the ground using the same optics and lasers that will fly in orbit. Next comes low Earth orbit in 2028. Commercial operations at [megawatt-scale transmission](#) from geosynchronous orbit are targeted to begin in 2030 with the world's first megawatt transmission from space. Based on current efficiency levels, the amount of solar panels to support 1 MW would be about 32,000 square feet (a 200' diameter circle).

### Additional Information Regarding Space-Based Solar Power Physics and Impacts

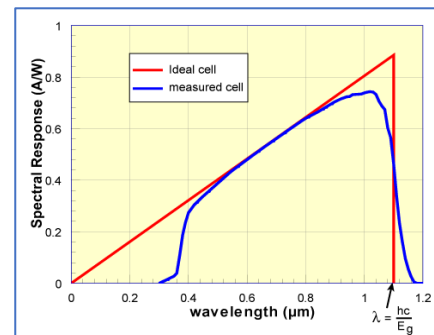
Near-infrared (NIR) is a band of the electromagnetic spectrum located just beyond the red end of visible light, ranging in wavelength from 700 to 1,400 nanometers (nm). While not specifically stated, the proposed Overview solar power station is expected to transmit energy in the 850nm to 940nm range (same wavelength as night vision cameras).

**Below: Diagram of the electromagnetic spectrum. Credit: NASA Science.**



Solar panels typically absorb wavelengths ranging from **300 nm to 1,100 nm**. This range spans the visible light spectrum (400–700 nm) and extends into the near-infrared and ultraviolet regions. Other wavelengths are categorized below:

- **Ultraviolet (300–400 nm):** Some absorption occurs at shorter wavelengths, though much of this is filtered out by the glass covering the panel.
- **Visible Light (400–700 nm):** This is the most efficient range for power generation, making up the bulk of a standard silicon panel's output.
- **Near-Infrared (700–1,100 nm):** Silicon solar cells can absorb near-infrared wavelengths, though efficiency drops off significantly past 1,100 nm.
- **Longer infrared wavelengths** are too weak to knock electrons loose (turning into heat instead), while extremely short wavelengths like X-rays are too energetic and pass through without generating electricity.



Graph Courtesy of [PVEducation.org](http://PVEducation.org)

The two most abundant molecules in the atmosphere are diatomic nitrogen and diatomic oxygen. Both are symmetrical diatomic molecules that lack a permanent dipole moment. As a result, they are almost entirely transparent to visible, infrared, and standard ultraviolet (UV) light.

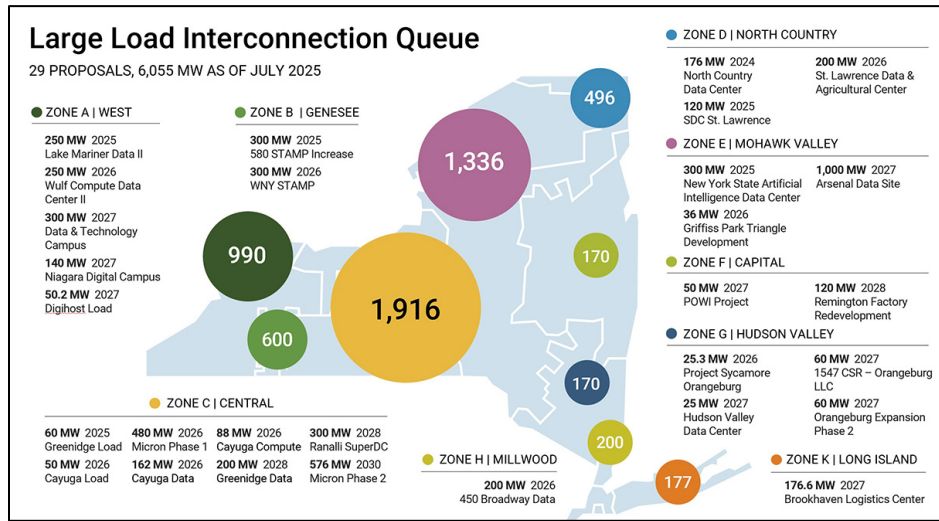
Greenhouse gases (GHGs) trap heat from the sun near Earth's surface, acting like a planetary blanket. Examples are:

- **Water Vapor:** The most abundant GHG contributes about half of the natural greenhouse effect. Trigger wavelengths are 2900nm and 6000nm
- **Carbon Dioxide:** Another significant driver of climate change, primarily emitted by burning fossil fuels (coal, natural gas, oil) and deforestation. Trigger wavelengths are 2700nm, 4300nm, and 15000nm
- **Methane:** A highly potent gas released during fossil fuel production, by livestock, and by rotting organic waste in landfills. Trigger levels are 3300nm and 7700nm
- **Nitrous Oxide:** Emitted heavily by agricultural practices, specifically the use of synthetic fertilizers, and industrial combustion. Trigger levels are 173nm and 190nm
- **Fluorinated Gases:** Examples include hydrofluorocarbons (refrigerants). Note that SF<sub>6</sub> (used as a dielectric and insulator) is an extremely potent and harmful greenhouse gas. Trigger levels range from 7800nm to 11000nm

Additional info can also be found here: [NASA Science Guide on the Greenhouse Effect](#)  
[US EPA Overview of Greenhouse Gases](#)

## A Closer Look at Large Loads in the NYISO Interconnection Queue

[\(Link to NYISO Blog with Map Image\)](#)



## Large Loads from the NYISO Interconnection Queue as of April 30<sup>th</sup>, 2026

	Zone	County	Queue Pos.	Project Name	Points of Interconnection	Utility	SP (MW)	Date of IR	Last Updated Date	In Svc Date
1	A	Erie	1726	Data & Technology Campus	Huntley - Packard 230kV line 78	NM-NG	300	1/31/2025	12/31/2025	01-2027
2	A	Niagara	1465	Dighost load	Walck Rd. 115kV	NM-NG	50	11/14/2022	4/30/2025	08-2027
3	A	Niagara	1670	Lake Mariner Data II	Kintigh 345kV Substation	NYSEG	250	1/23/2024	4/30/2025	06-2025
4	A	Niagara	1681	Niagara Digital Campus	Adams to Packard 115kV lines 187 and 188	NM-NG	140	4/9/2024	3/31/2025	12-2027
5	A	Niagara	1732	Wulf Compute Data Center II	Kintigh 345kV sub-station	NYSEG	250	3/29/2025	12/31/2025	06-2026
6	A	Niagara	1741	North East Data LLC Data Center	230kV lines 77 and 78	NM-NG	500	8/29/2025	12/31/2025	05-2027
7	A	Niagara	1747	Globe Digital Holdings - 1	Beck Packard 76 230kV	National Grid	200	10/17/2025	4/30/2026	06-2027
8	A	Niagara Falls	1748	GLOBE DH 2	Beck Packard 76 230kV	National Grid	200	10/17/2025	1/31/2026	06-2027
9	A	Niagara Falls	1749	Globe DH 3	Niagara Packard 77 230kV	National Grid	200	10/17/2025	1/31/2026	10-2026
10	B	Genesee	0580	WNY STAMP	Kintigh/Niagara - New Rochester 345kV	NYPA	300	9/27/2016	3/31/2025	11-2026
11	B	Genesee	1484	580 STAMP load increase	115 kv STAMP substation	NM-NG	300	12/2/2022	12/31/2023	11-2026
12	C	Broome	1752	Broome County Tech Park	345 kv POI via a loop on Oakdale-Fraser Line 32	NYSEG	250	10/30/2025	1/31/2026	12-2029
13	C	Cayuga	0850	Cayuga Load	Milliken 115kV	NYSEG	50	5/21/2019	4/30/2024	12-2026
14	C	Horseheads	1761	NYISO Load Inter Process - Data Center Inq	Broad Street 34.5 kV Line 93	NYSEG	150	4/12/2026	4/30/2026	01-2027
15	C	Onondaga	1536	White Pine Phase 1	Clay 345 kV Substation	NM-NG	480	3/11/2023	2/29/2024	06-2026
16	C	Onondaga	1627	Micron Fab 2	National Grid Clay 345 kV Substation	NM-NG	576	10/31/2023	6/30/2024	09-2030
17	C	Onondaga	1736	Ransall SuperDC	Clay to Pannell ckt PC-1 and PC-2	NYPA	300	5/7/2025	2/28/2026	05-2028
18	C	Onondaga	1746	OOWWTP Expansion Program	National Grid's 115kV Clay-Teall and Clay-Woodard	National Grid	50	10/15/2025	2/28/2026	02-2029
19	C	Tompkins	1683	Cayuga Compute	Milliken substation 115kV	NYSEG	88	4/24/2024	5/31/2025	10-2026
20	C	Tompkins	1733	Cayuga Data	Milliken 115kV Substation	NYSEG	162	3/29/2025	12/31/2025	08-2026
21	C	Yates	0776	Greenidge Load	Greenidge 115kV	NYSEG	60	10/22/2018	3/31/2026	04-2030
22	C	Yates	1725	Greenidge 200 MW Data Center Project	NYSEG - Greenidge 115 kV Substation	NYSEG	200	12/20/2024	12/31/2025	10-2029
23	D	St. Lawrence	0979	North Country Data Center	Reynolds 115kV	NYPA	176	1/22/2020	7/31/2023	12-2024
24	D	St. Lawrence	1213	St Lawrence Data and Agricultural Center	Dennison 115kV substation	NM-NG	200	6/28/2021	1/14/2023	01-2026
25	D	St. Lawrence	1315	SDC St. Lawrence	Moses-Reynolds MRG-1 and MRG-2 at 115kV	NYPA	120	12/20/2021	9/30/2022	08-2025
26	D	St. Lawrence	1743	St. Lawrence Infrastructure 2	NYPA's 230kV Moses Massena 1 (MMS-1) and MMS-2)	NYPA	1,935	9/2/2025	1/31/2026	07-2030
27	D	St. Lawrence	1751	Massena Development LLC Power Allocation	NYPA - HW1 and HW2 (345kV) Haverstock Substation	NYPA	200	10/21/2025	1/31/2026	07-2027
28	E	Herkimer	1735	Remington Factory Redevelopment	Ilion Municipal 115kV substation	IMEU	100	5/2/2025	4/30/2026	07-2027
29	E	Herkimer	1740	Incr Remington Factory Redevelopment	Line 1: EDIC to Fraser. 2: Marcy to Coopers Corners	NYPA	400	8/29/2025	4/30/2026	08-2028
30	E	Oneida	1737	Griffiss Park Triangle Development	Gulf to Rome 115kV line	NM-NG	66	6/3/2025	1/31/2026	12-2027
31	E	St. Lawrence	1728	Arsenal Data Site 250	Haverstock to Adirondack 345kV line HA-1	NYPA	233	3/7/2025	12/31/2025	03-2027
32	E	St. Lawrence	1729	Arsenal Data Site 500	Haverstock to Adirondack 345kV line HA-1	NYPA	233	3/7/2025	12/31/2025	03-2027
33	E	St. Lawrence	1730	Arsenal Data Site 1000	Haverstock to Adirondack 345kV line HA-1	NYPA	467	3/7/2025	12/31/2025	03-2027
34	E	St. Lawrence	1745	Pontoon Bridge Road Data Center	Haverstock-Adirondack 345kV transmission lines	NYPA	250	10/9/2025	1/31/2026	10-2026
35	E	St. Lawrence	1731	NY State Artificial Intelligence Data Center	Haverstock-Adirondack 345kV transmission line HA-2	NYPA	300	3/14/2025	12/31/2025	10-2026
36	E	St. Lawrence	1742	St. Lawrence Infrastructure 1	NYPA HA-2, 345kV Transmission Line	NYPA	860	9/2/2025	1/31/2026	12-2029
37	F	Albany	1646	POWI Project	New Scotland to Knickerbocker 345kV line	NM-NG	50	11/30/2023	7/31/2024	01-2027
38	F	Albany	1750	AI Tech Steel Site	Maplewood Menands 18	NM-NG	60	10/21/2025	12/31/2025	06-2027
39	F	Albany	1753	NYS Dept. of Health Lab (Harriman Campus)	Woodlawn-State Campus and Menands-State Campus	National Grid	20	11/4/2025	4/30/2026	01-2030
40	F	Albany	1754	Kenwood Tech Center	Albany?Bethlehem 115 kV Line #18	National Grid	180	11/11/2025	1/31/2026	12-2028
41	F	Albany	1755	Site Master Plan Expansion Phase I	Patron Creek and McKnownville	National Grid	45	12/18/2025	1/31/2026	01-2029
42	F	Saratoga	1759	Saratoga Expansion	Adjacent to existing 34.5kV, new 115kV substation	National Grid	40	3/25/2026	4/30/2026	01-2028
43	F	Schenectady	1758	GE Vernova 2690 Balltown Road High Yard	Rosa Road - General Electric R&D National Grid #14	National Grid	20	1/29/2026	3/31/2026	08-2027
44	G	Dutchess	1760	iPark 84 Data Center Interconnection	New 115kV line from CHG&E East Fishkill Substation	Central Hudson	150	3/25/2026	4/30/2026	10-2028
45	G	Orange	1716	Orangeburg Expansion Phase 2	Oak St 38kV substation	O&R	30	8/5/2024	6/30/2025	12-2027
46	G	Rockland	1713	Project Sycamore Orangeburg	Oak Street 138kV	O&R	22	6/19/2024	6/30/2025	01-2026
47	G	Rockland	1714	Hudson Valley Data Center	Line 60 138kV - Ramp to Tailman	O&R	50	7/2/2024	6/30/2025	02-2027
48	G	Rockland	1715	1547 CSR - Orangeburg LLC	138kV Line 703 between Corp Dr and Harings Corner	O&R	30	7/2/2024	6/30/2025	01-2027
49	H	Dutchess	1738	1 Gig Data Center East Fishkill, NY	East Fishkill to Wood Street 345 kV lines (38 and 39)	CONED	1,000	7/17/2025	3/31/2026	10-2028
50	H	Westchester	1717	Proposed Datacenters Buchanan, NY	Buchanan 138kV Substation	ConEd	200	8/7/2024	9/30/2025	09-2028
51	K	Suffolk	1721	Brookhaven Logistics Center	138-872 Holbrook to Sills Rd	LIPA	177	10/28/2024	7/31/2025	01-2027
							Total	12,670		

Month over month increase in Project Count = 1, along with a net increase in Total Project Load = 150 MW.

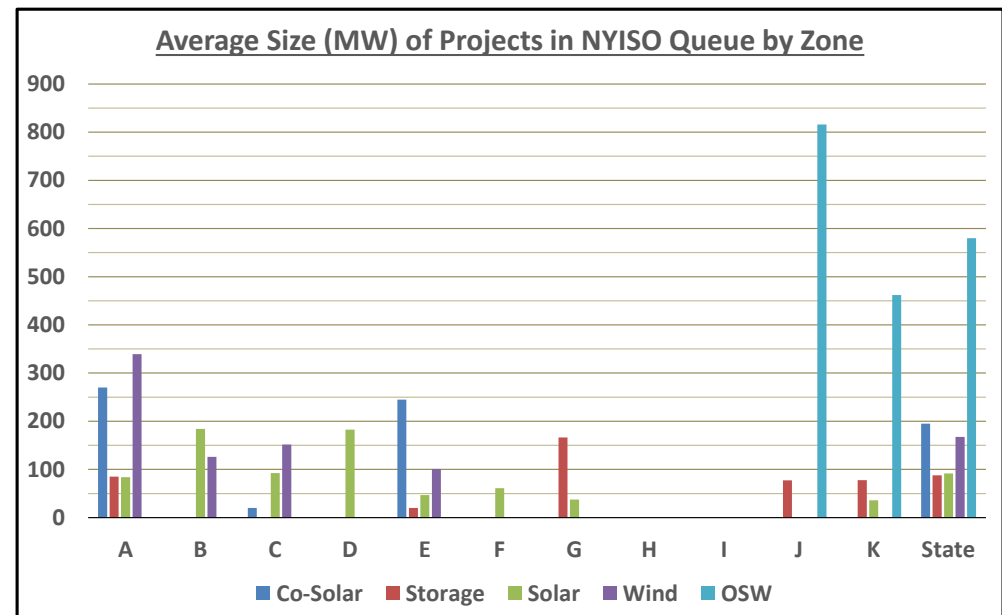
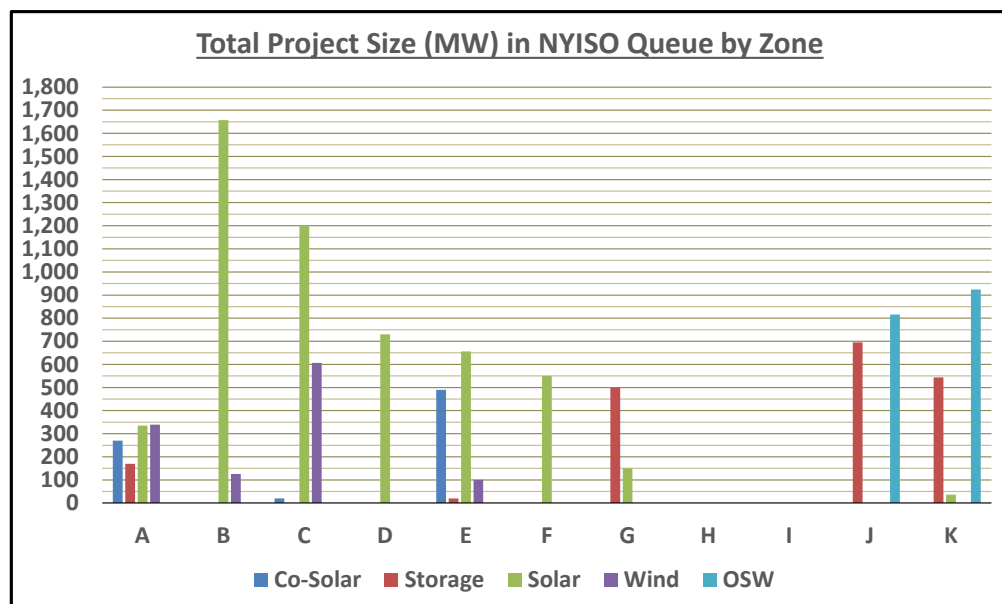
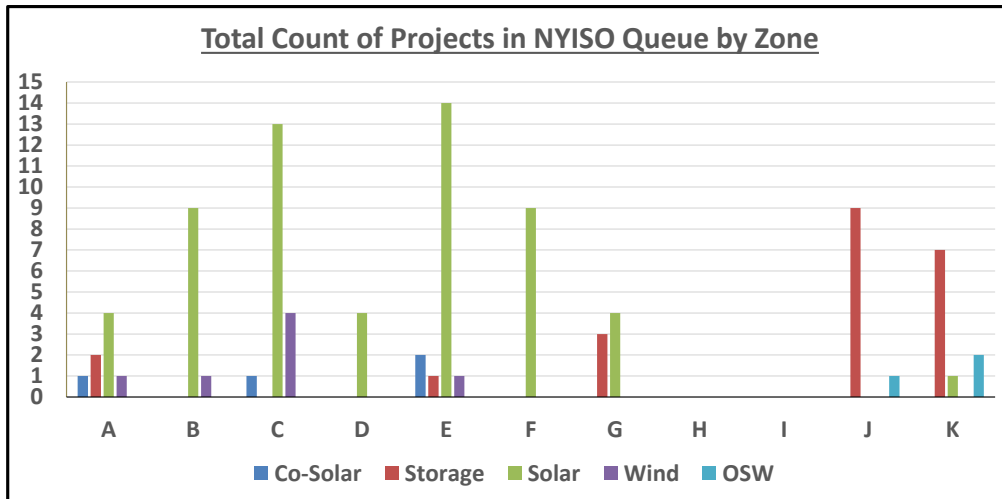
**Interconnection Queue: Monthly Snapshot – Storage / Solar / Wind / CSRs (Co-located Storage)**

The intent is to track the growth of Co-Located Solar / Storage, Energy Storage, Solar, Wind, and Offshore Wind (OSW) projects in the NYISO Interconnection Queue, looking to identify trends and patterns by zone and in total for the state. The information was obtained from the [NYISO Interconnection Website](#), based on information published on May 20<sup>th</sup>, and representing the Interconnection Queue as of April 30<sup>th</sup>. Note that one project was added, and four projects were withdrawn during the month of April.

Total Count of Projects in NYISO Queue by Zone					
Zone	Co-Solar	Storage	Solar	Wind	OSW
A	1	2	4	1	
B			9	1	
C	1		13	4	
D			4		
E	2	1	14	1	
F			9		
G		3	4		
H					
I					
J		9			1
K		7	1		2
State	4	22	58	7	3

Total Project Size (MW) in NYISO Queue by Zone					
Zone	Co-Solar	Storage	Solar	Wind	OSW
A	270	170	335	339	
B			1,658	126	
C	20		1,203	607	
D			730		
E	490	20	656	101	
F			551		
G		499	150		
H					
I					
J		695			816
K		544	36		924
State	780	1,928	5,318	1,173	1,740

Average Size (MW) of Projects in NYISO Queue by Zone					
Zone	Co-Solar	Storage	Solar	Wind	OSW
A	270	85	84	339	
B			184	126	
C	20		93	152	
D			183		
E	245	20	47	101	
F			61		
G		166	38		
H					
I					
J		77			816
K		78	36		462
State	195	88	92	168	580



**Cluster Interconnection Queue: Monthly Snapshot – Storage / Solar / Wind / CSRs (Co-located Storage)**

The intent is to track the growth of the Cluster-based projects, including Co-Located Solar and Wind / Storage, Energy Storage, Solar, Wind, and Offshore Wind (OSW) projects in the NYISO Interconnection Queue, looking to identify trends and patterns by zone and total for state. Information is based on the Cluster Interconnection Queue as of April 30<sup>th</sup>, and published on May 20<sup>th</sup>. Large Load summary information has been added to these tabulations and graphs for comparative context.

Note that within the Cluster Queue, the monthly totals was reduced by 3 to 88 projects totaling 15,530 MW, representing a reduction of 80 MW. A total of 285 projects representing 59,953 MW are listed as having been withdrawn to date.

Total Count of Cluster Projects in NYISO Queue by Zone						
Zone	Co-Solar	Storage	Solar	Wind	OSW	Lg Load
A	2	5		4		9
B	1	1				2
C	1	10	4	4		11
D		3	2	2		5
E	3	2	2			9
F		5	1			7
G		11				5
H		2				2
I						
J		10			1	
K		11			1	1
State	7	60	9	10	2	51

Total Cluster Project Size (MW) in NYISO Queue by Zone						
Zone	Co-Solar	Storage	Solar	Wind	OSW	Lg Load
A	650	930		246		2,090
B	170	100				600
C	130	1,810	510	292		2,366
D		375	300	760		2,631
E	400	175	300			2,909
F		920	100			415
G		1,699				282
H		250				1,200
I						
J		1,676			1,310	
K		1,107			1,321	177
State	1,350	9,042	1,210	1,298	2,631	12,670

Average Size (MW) Cluster Projects in NYISO Queue by Zone						
Zone	Co-Solar	Storage	Solar	Wind	OSW	Lg Load
A	325	186		61		232
B	170	100				300
C	130	181	127	73		215
D		125	150	380		526
E	133	88	150			323
F		184	100			59
G		154				56
H		125				600
I						
J		168			1,310	
K		101			1,321	177
State	193	151	134	130	1,316	248

